

# multi fit deck lid



## QUALITY DESIGNED TO LAST

Highly durable plastic and choice of three ring adaptors combine to create the ultimate deck lid.

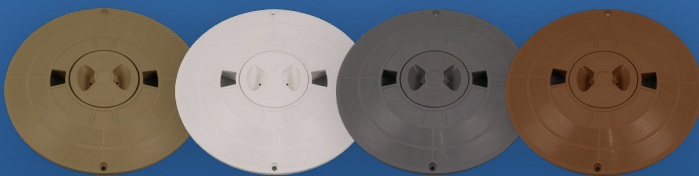
- ✔ Tough PVC construction
- ✔ Built for Australian conditions
- ✔ Simple two minute installation
- ✔ Adapts to fit most skimmers
- ✔ Choice of four stylish colours

# YOUR GO-TO REPLACEMENT FOR STANDARD SKIMMER LIDS



Manufactured with a tough hard-wearing PVC, the Multi Fit Deck Lid is designed to endure the most demanding pool environments and harshest Australian summers.

With four stylish colours to choose from, it's never been easier to find a lid that blends effortlessly with your pool deck.



SANDSTONE

WHITE

GREY

TAN

Installation is simple and can be completed in minutes. Just attach the interchangeable ring that best fits your existing skimmer.

Trust the Multi Fit Deck Lid will have you covered.

The Multi Fit Deck Lid is compatible with skimmer boxes from:

- ✔ Hayward
- ✔ Nally
- ✔ Paramount
- ✔ Poolrite
- ✔ Waterco
- ✔ Swimquip
- ✔ Quipton
- ✔ Filtrite
- ✔ Baker Hydro
- ✔ ...and more

Please check compatibility with your specific model before purchasing.